
ROMANIAN NATIONAL AND NATURE PARKS

MANAGEMENT HISTORY

Until 1990 - no administrations, forest management plans, designated nature reserves

Ministerial order 1990 - 13 national parks

GEF project - Danube Delta

GEF project - park models in the Carpathians - 3 sites, administrations, management plans, monitoring, public awareness, community outreach, infrastructure, first Protected Areas Law in 2000

2004 - 17 administrations

Prezent - DDBRA + 24 administrations (22 NFA and 2 County Councils) - 24 members in our Association

Custodians - NGO's - not anymore

National Agency for Nature Protected Areas - created in 2017, central and county structures

PAS CATEGORIES - NATIONAL, INTERNATIONAL, EUROPEAN

NATIONAL	INTERNATIONAL	EUROPEAN
I Scientific reserves	Natural Heritage Sites (1+1)	Habitats and Birds Directives
II National Parks (13)	Ramsar Sites 20	Natura2000
III Nature monuments	Geoparks - 1 and (1+2)	
IV Nature reserves	Biosphere reserves (1+2)	
V Nature parks (17)		

ADMINISTRATION

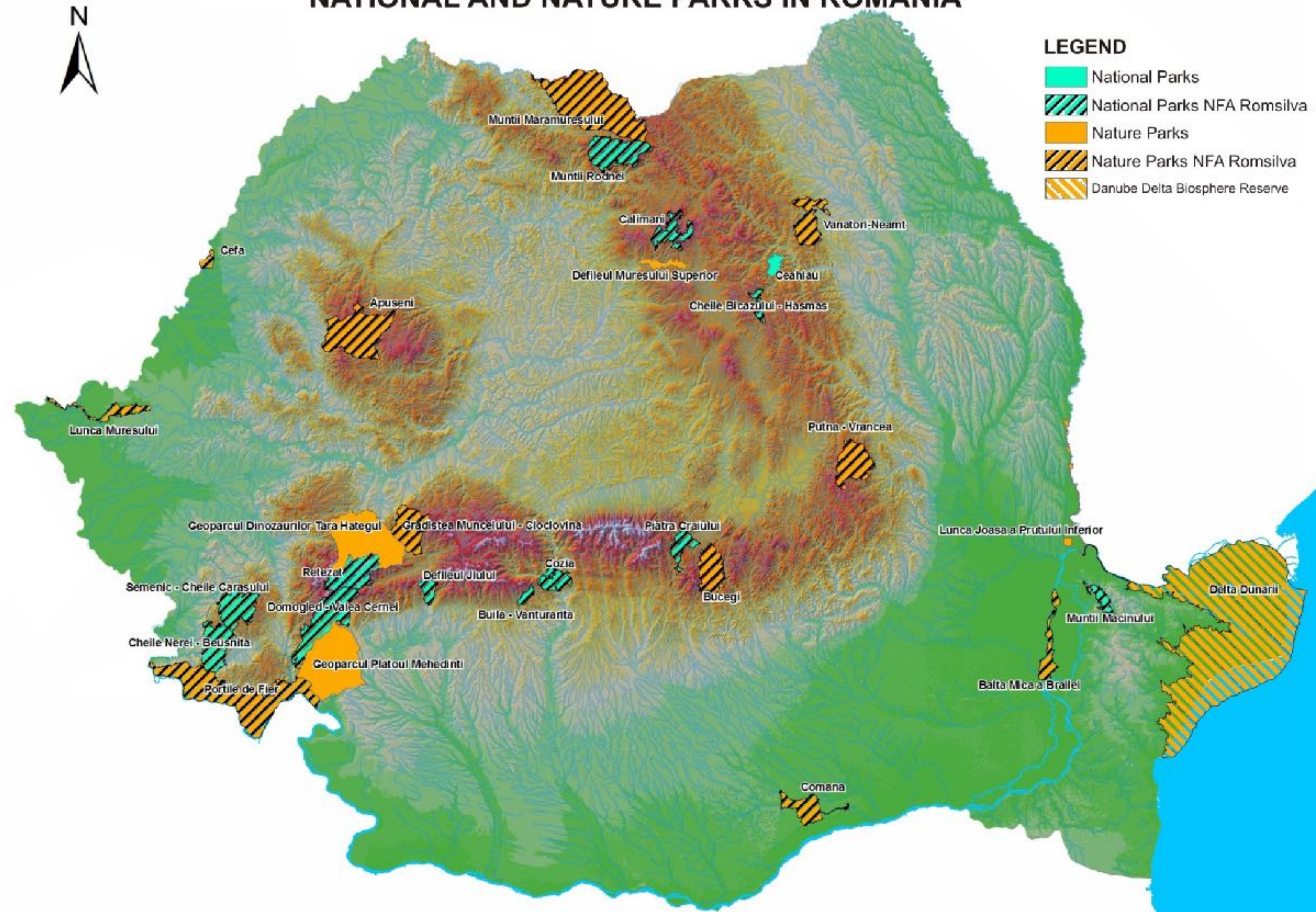
Management authority

Scientific council - approves the management plan and all the activities with potential impact on the PA, including forest management plans, internal zoning

Consultative council

Councils approved through MoE Order

NATIONAL AND NATURE PARKS IN ROMANIA



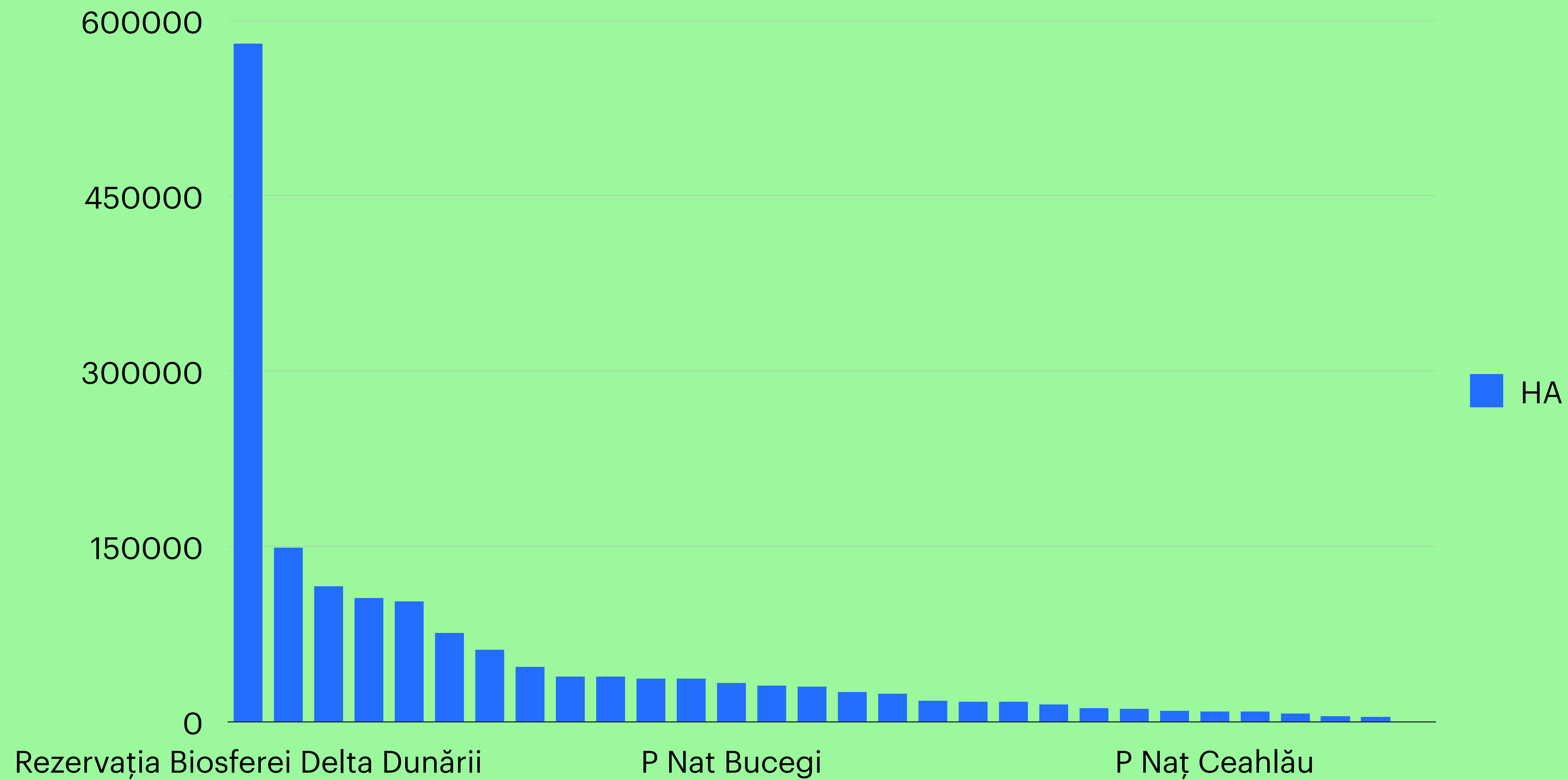
National PAs - 7.5%

National parks - 1.33%

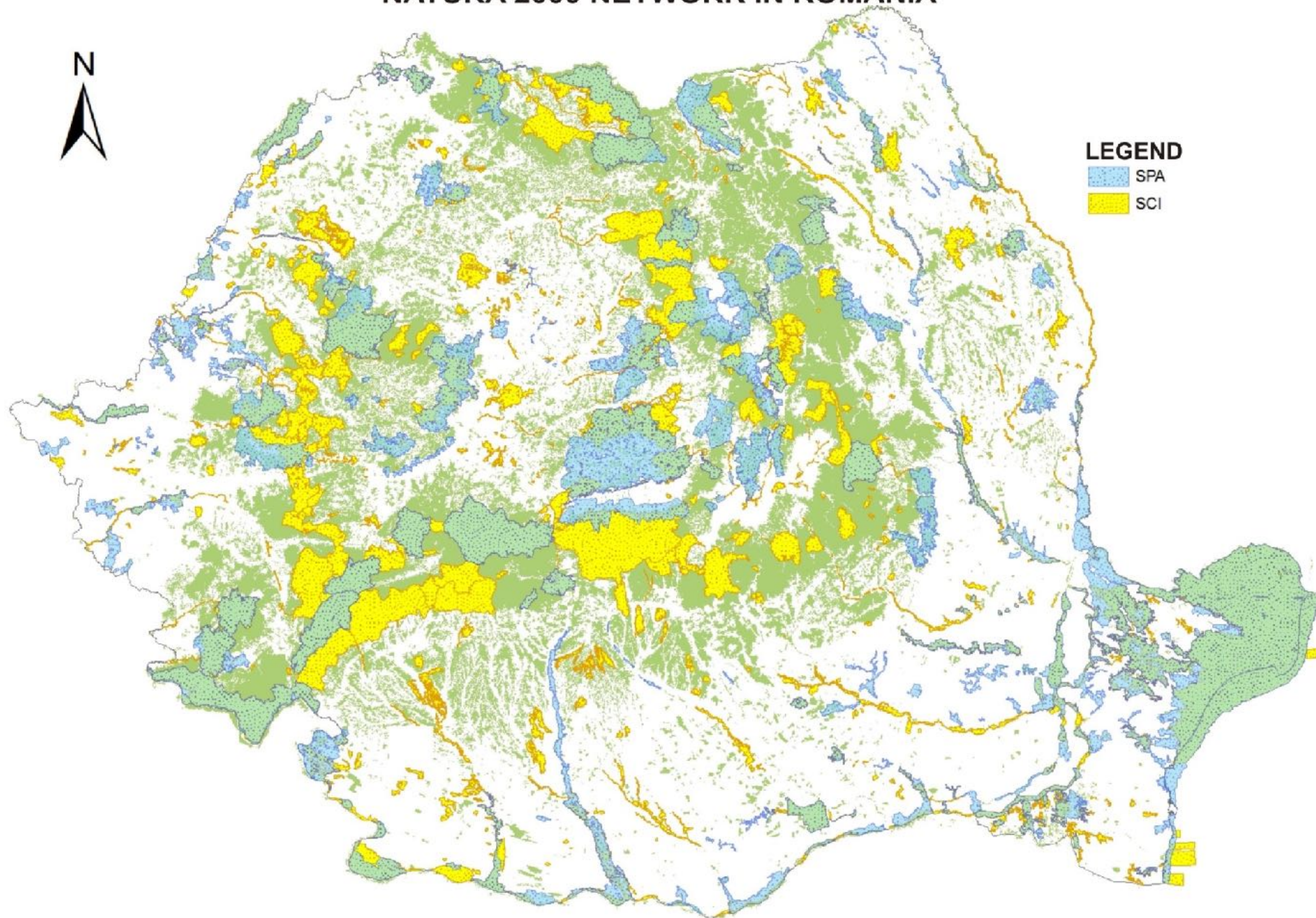
**Around 240,000 ha of forest
in no harvesting zones in PAs**

**Core areas of parks, DDBR and
nature rezerves**

No hunting in national parks



NATURA 2000 NETWORK IN ROMANIA



Almost all national
PAs are overlapping
totally or partially
with the N2000
sites

MANAGEMENT

Contracts with the MoE and NANPA

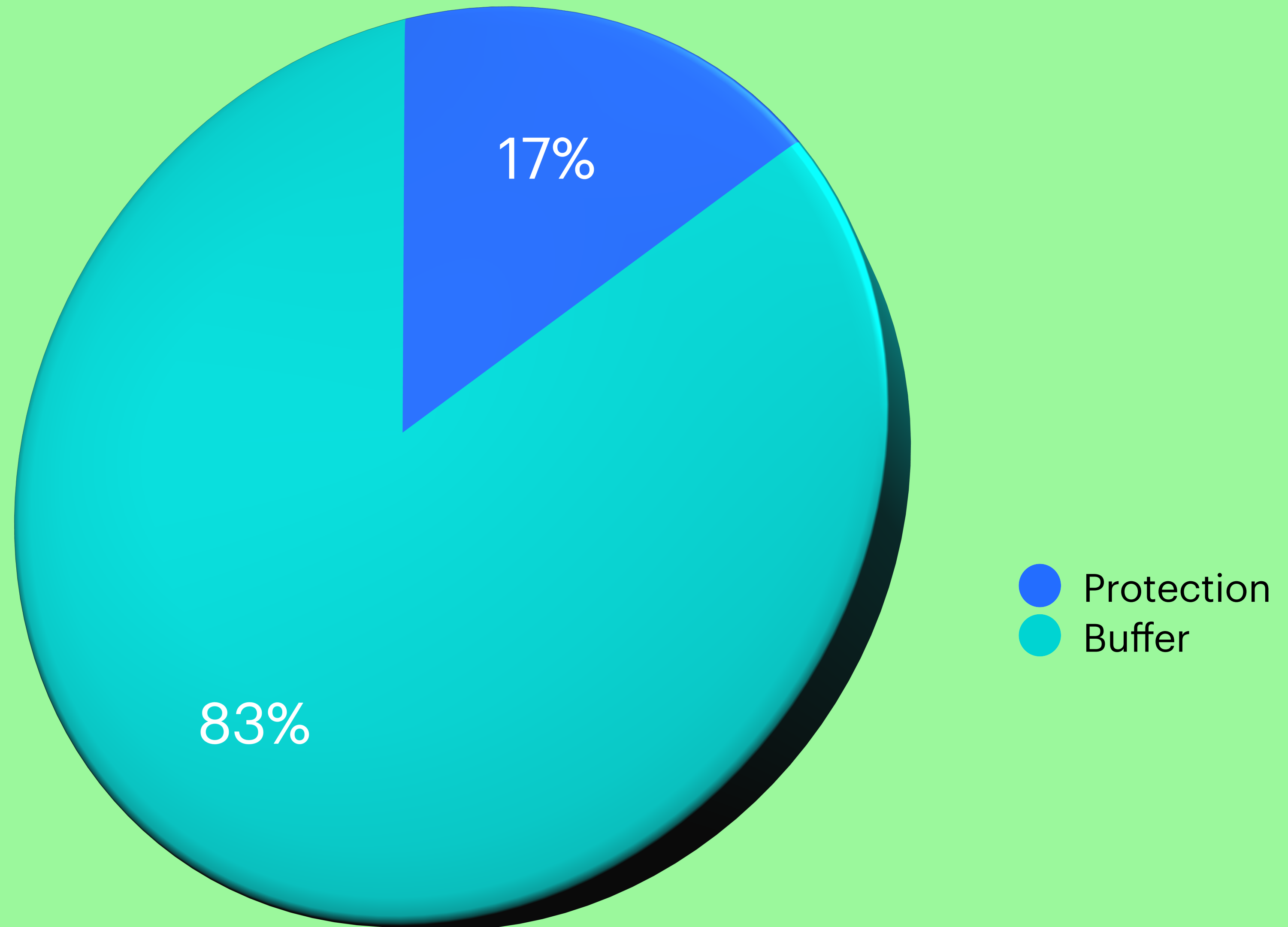
Structures - legal person - 22 administrations - 360 employees

Annual budget - 6.5 mil euro - approved through a ministerial order

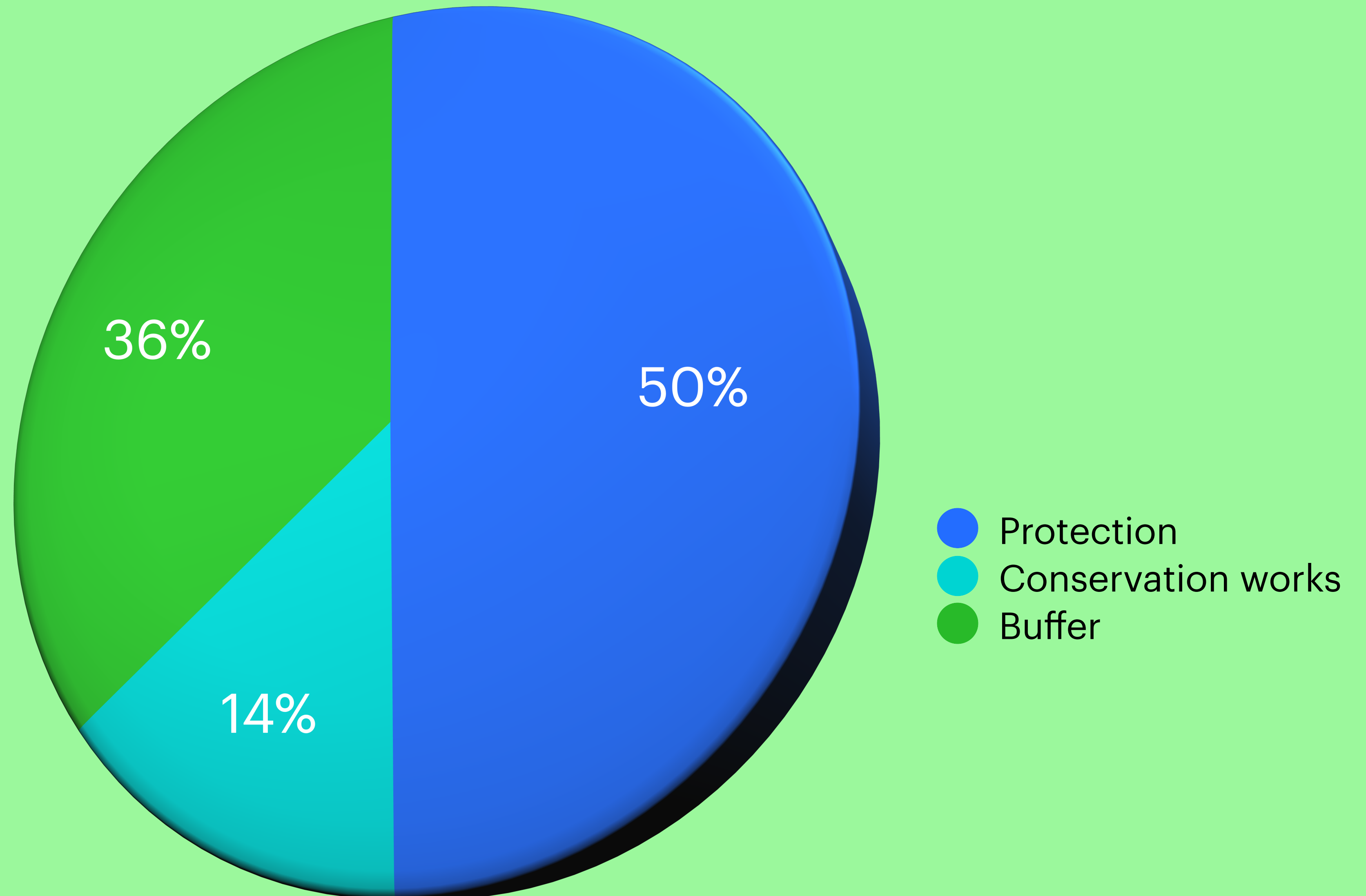
Average - 10% from own income

Since 2004 - 70 projects with approx. 80 mil euro - management plans, monitoring, visitor infrastructure, capacity development

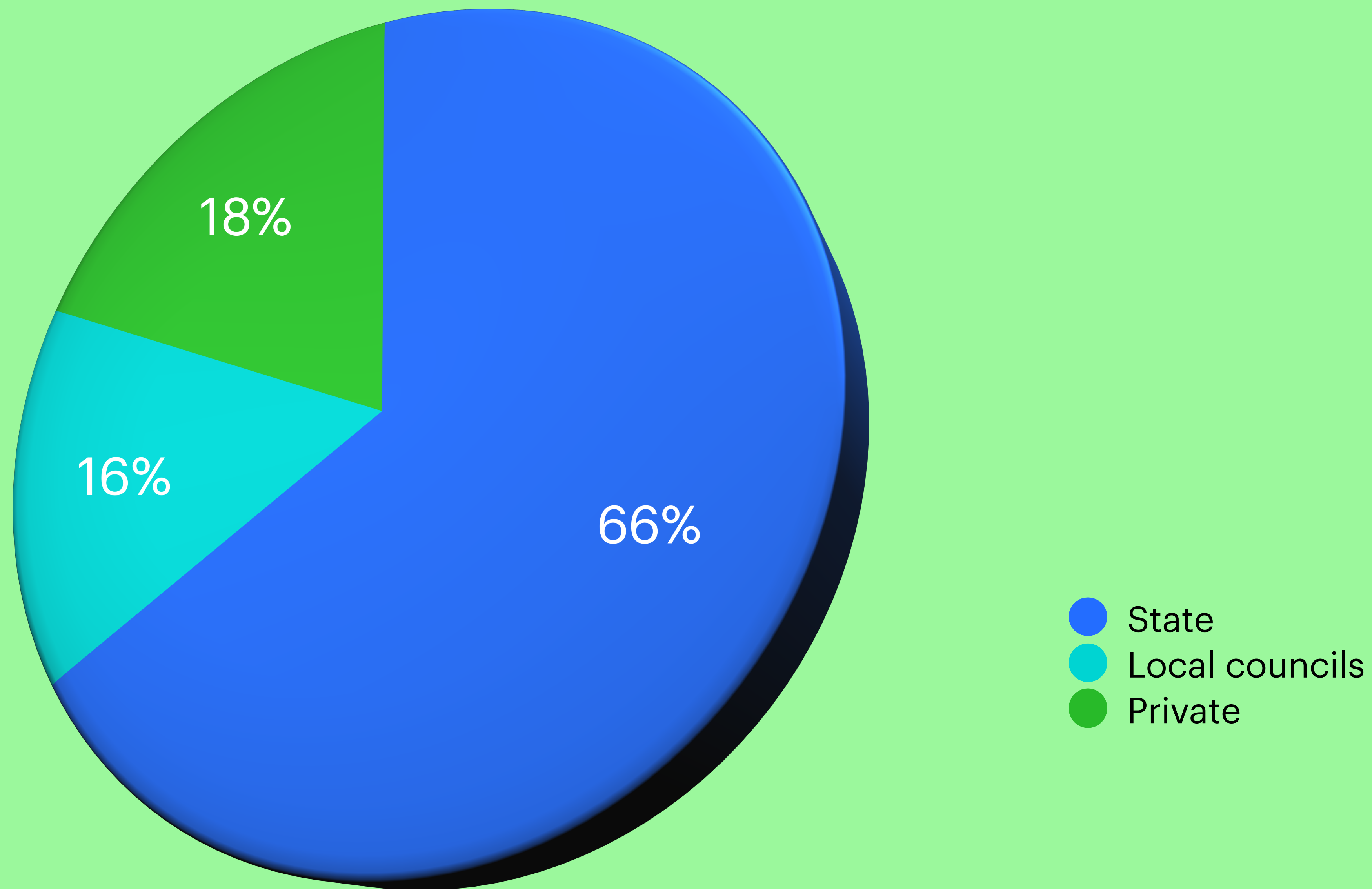
Forest zonation in nature parks (10
NFA) -total forest area - 331 th ha



Forest zonation in national parks-
total forest area-239 ths ha



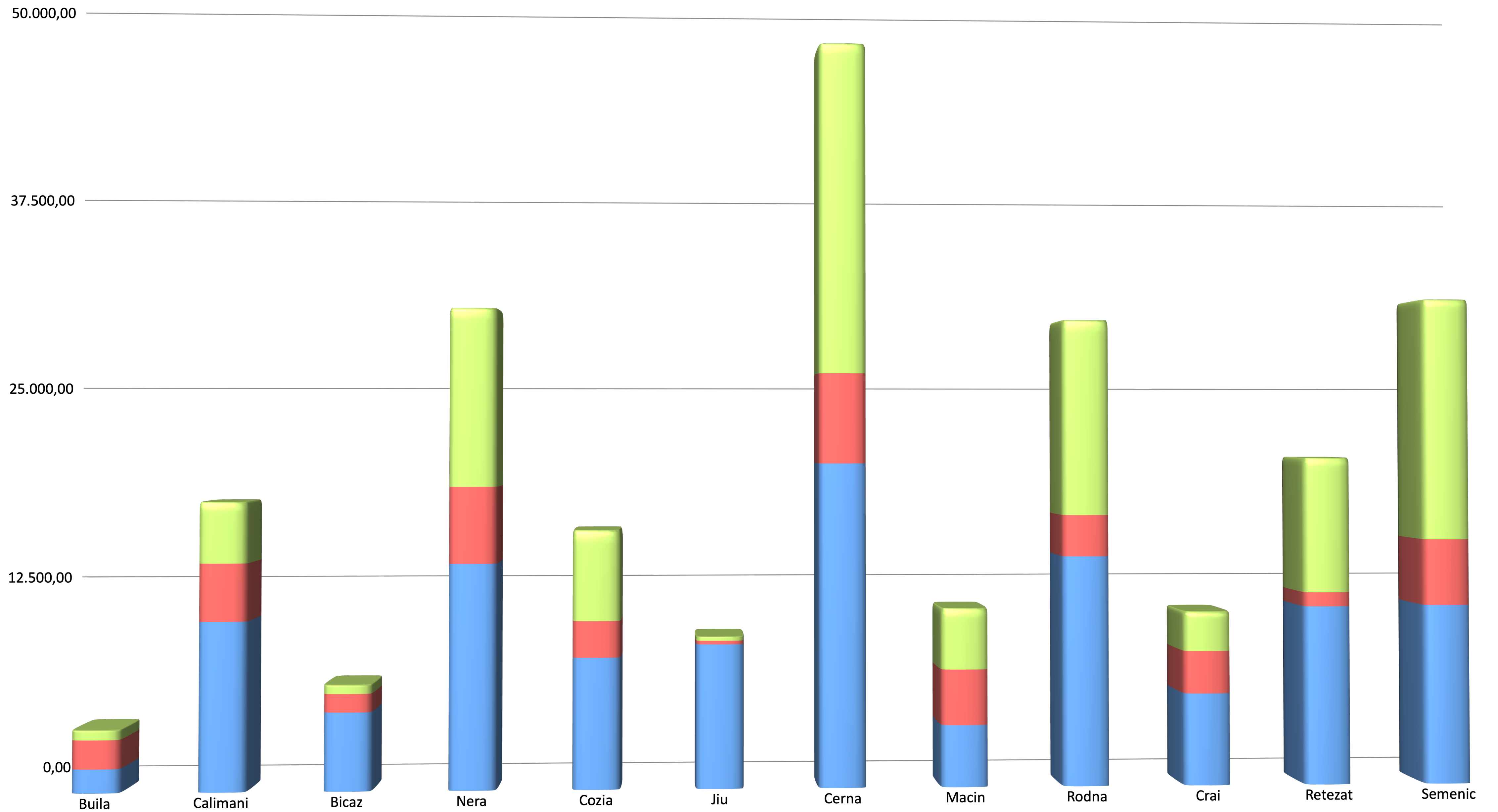
Forest ownership in national parks-239 th ha



Protection

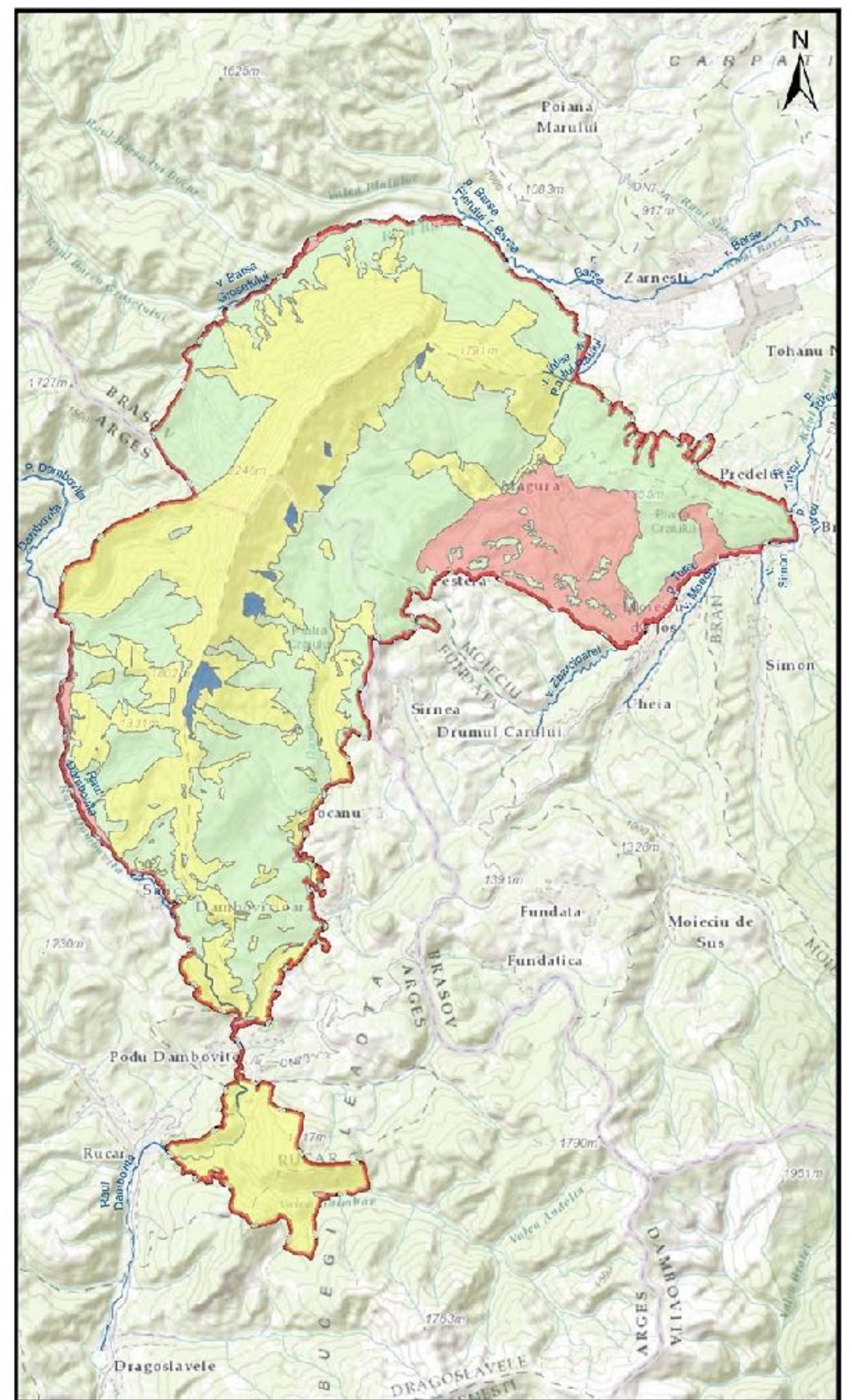
Conservation works

Buffer









Piatra Craiului National Park internal zoning

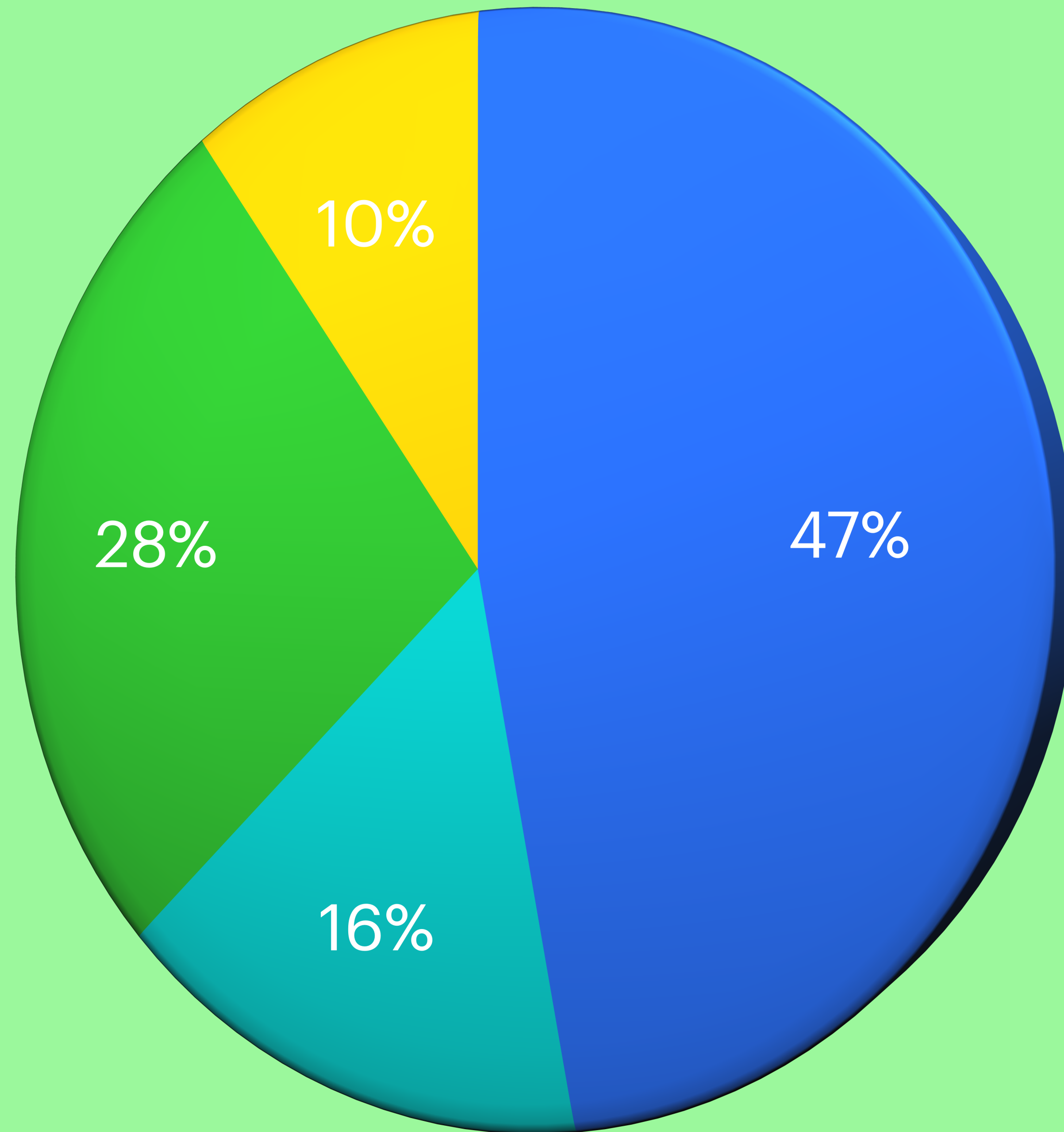


Legend

- Strictly protected area
- Strictly protected area

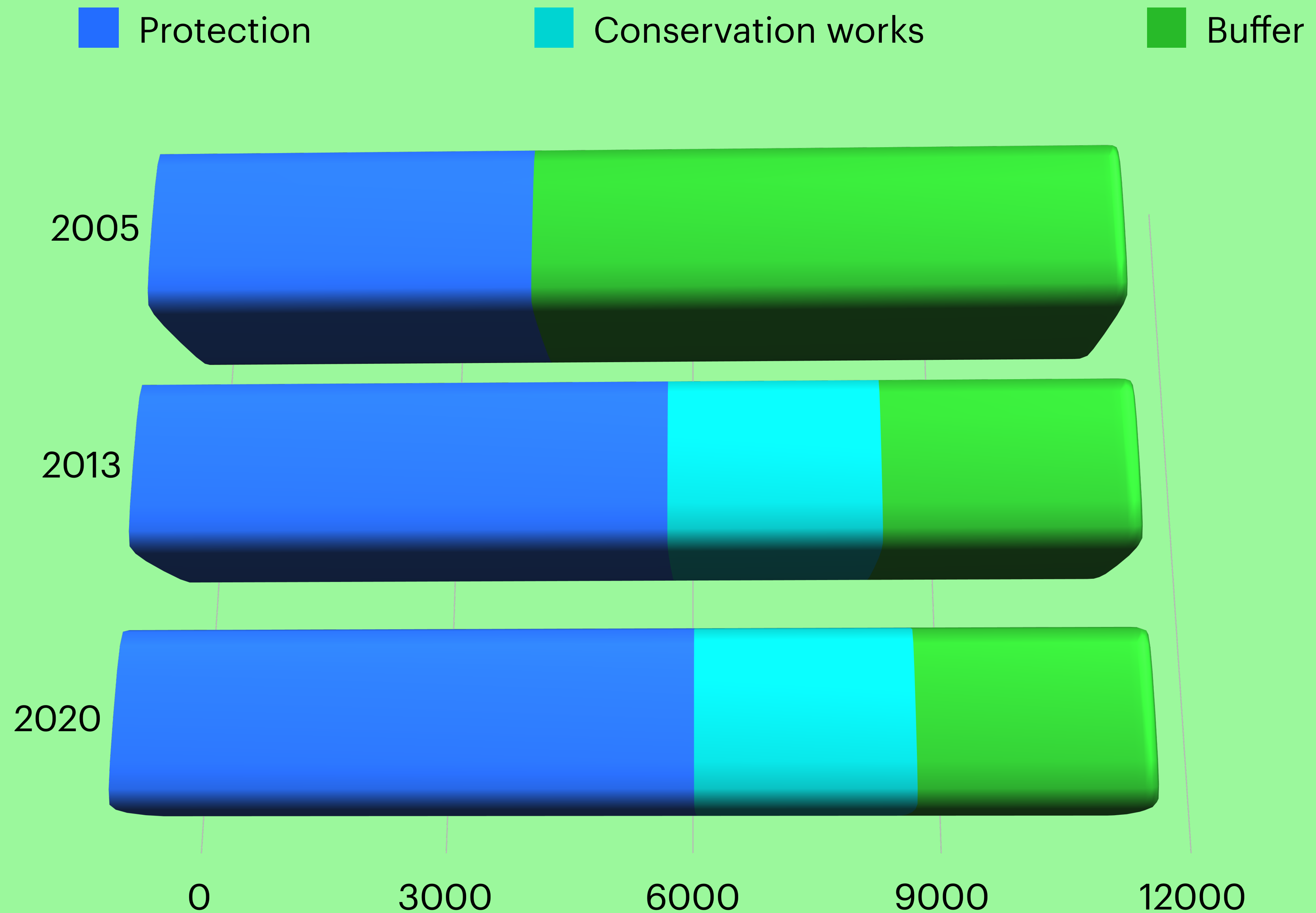
- Sustainable conservation area
- Sustainable development area
- Piatra Craiului National Park boundary

Piatra Craiului NP zoning 14.7 ths ha



- Protection
- Conservation works
- Buffer
- Development area

Forest internal zoning evolution - Piatra Craiului National Park



CHALLENGES

National parks internal zoning - 75% aim - through a national level decision

Analysis of internal zoning including tourist interests and visible landscape impact

Strong commitment for compensations for owners

Improvement of harvesting technologies - skyline, forwarders instead of skidding where possible

Non forest land management - mountain hay meadows vs pastures - incentive subsidies for hay meadows

Land use planning tendencies - increase of construction designated areas, even when there is a population decrease

Preserving local architecture style - for nature parks - no incentives

Climate change - review of guidelines for forest regeneration, areas with spruce - bark beetle

New developments on various directions - “green” energy, transport, tourism, ski areas, off roaders

Underdeveloped network - ecological corridors missing